

MONTHLY MEMBERSHIP PROGRESS REPORT

District 49 B

Results as of: 5/31/2026

GMT:

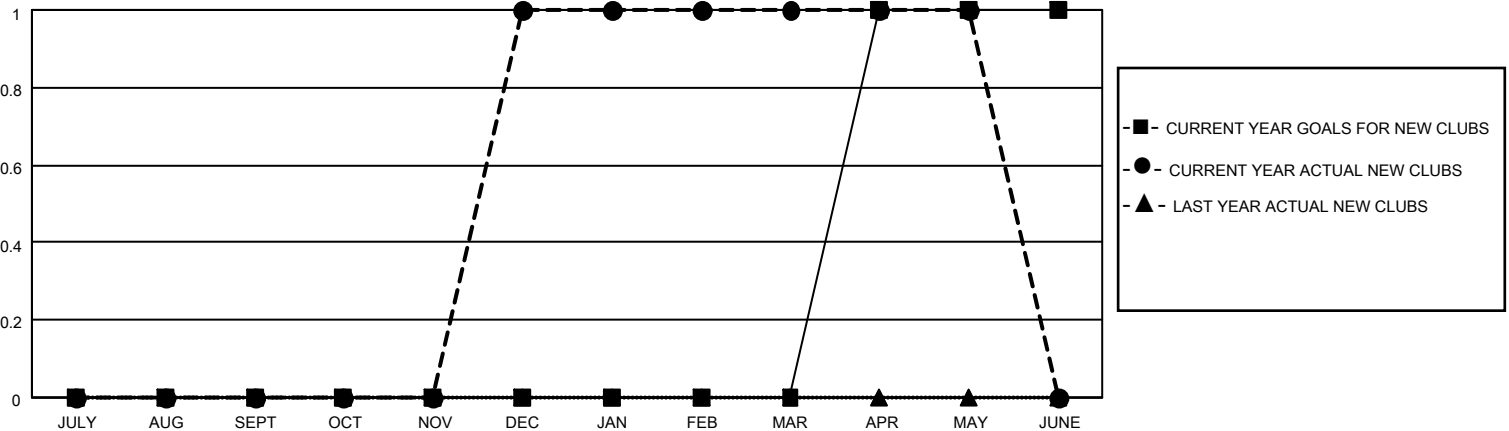
LOCATION ALASKA

GMT CA

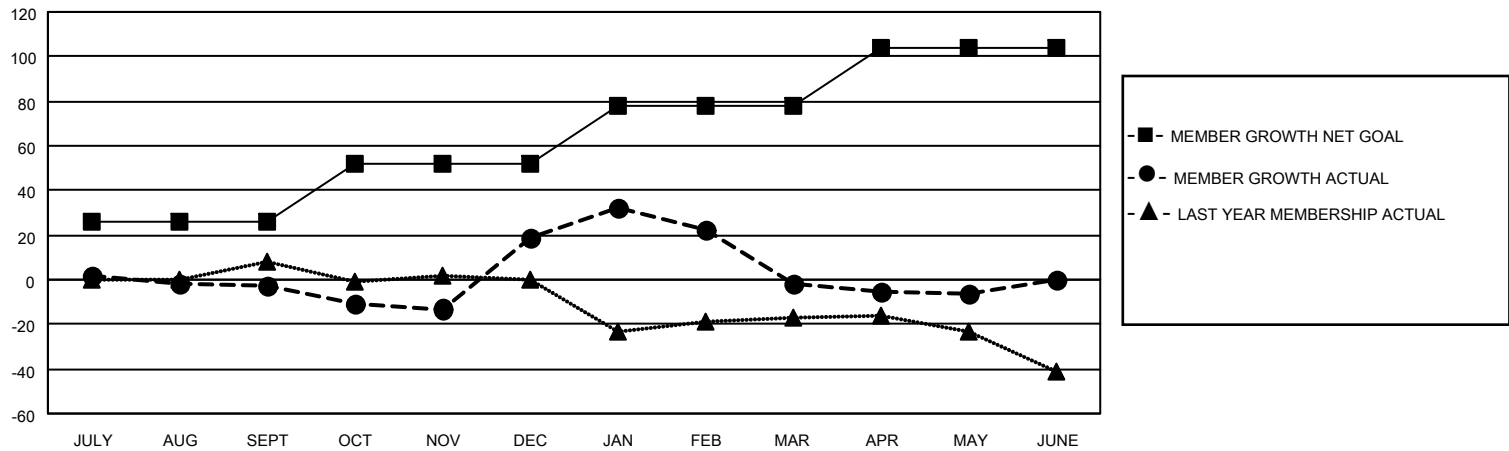
Clubs			
RESULTS FOR 2025-2026			
QUARTER	NEW CLUB GOAL	NEW CLUBS	DROPPED CLUBS
JULY/AUG/SEPT	0	0	0
OCT/NOV/DEC	0	1	0
JAN/FEB/MAR	0	0	0
APR/MAY/JUNE	1	0	0

Members			
RESULTS FOR 2025-2026			
QUARTER	MEMBER GROWTH NET GOAL	MEMBER GROWTH ACTUAL	DROPPED MEMBERS ACTUAL (including transfers)
JULY/AUG/SEPT	26	10	12
OCT/NOV/DEC	26	55	29
JAN/FEB/MAR	26	43	49
APR/MAY/JUNE	26	6	8

GOALS AND ACTUAL NEW CLUBS CUMULATIVE



GOALS AND ACTUAL MEMBERS CUMULATIVE



DROPPED CLUBS: 0	15 CLUBS OF 27 ADDED 1 OR MORE NEW MEMBERS	GENDER DISTRIBUTION MALE 416 (57.78%) FEMALE 304 (42.22%)
DROPPED MEMBERS DECEASED 10 CLUB CANCELLED 0 OTHER 87 TOTAL 97	CLICK HERE FOR CUMULATIVE MEMBERSHIP DATA	TOTAL FAMILY UNIT MEMBERS 168 FAMILY MEMBERS PAYING HALF DUES 86